



SLOVENIA FOREST SERVICE



Life III – Natura

Conservation of Large Carnivores in Slovenia

– Phase I

(Ursus arctos L.)

Miha Marenče, M.Sc.
SLOVENIA FOREST SERVICE



From the start



- **Brown bear (*Ursus arctos*) management strategy in Slovenia** was the base for preparation of the project.
- Slovenia Forest Service prepared Application forms in cooperation with 7 partners.
- Commission adopted the project:
LIFE02NAT/SLO/8585 "Conservation of large carnivores in Slovenia – Phase I (*Ursus arctos*)"



The Partners

Applicant - Slovenia Forest Service

Partners - Ministry of Agriculture, Forestry and Food
(7) - Ministry of Environment and Spatial Planning
- University of Ljubljana, Biotechnical Faculty
- Fund for Agricultural Land and Forests (RS)
- Slovenian Hunters' Association
- Oikos Inc.
- Pristop Inc.



Duration of the Project



Duration: 3 years

Start: September 2002

End: August 2005



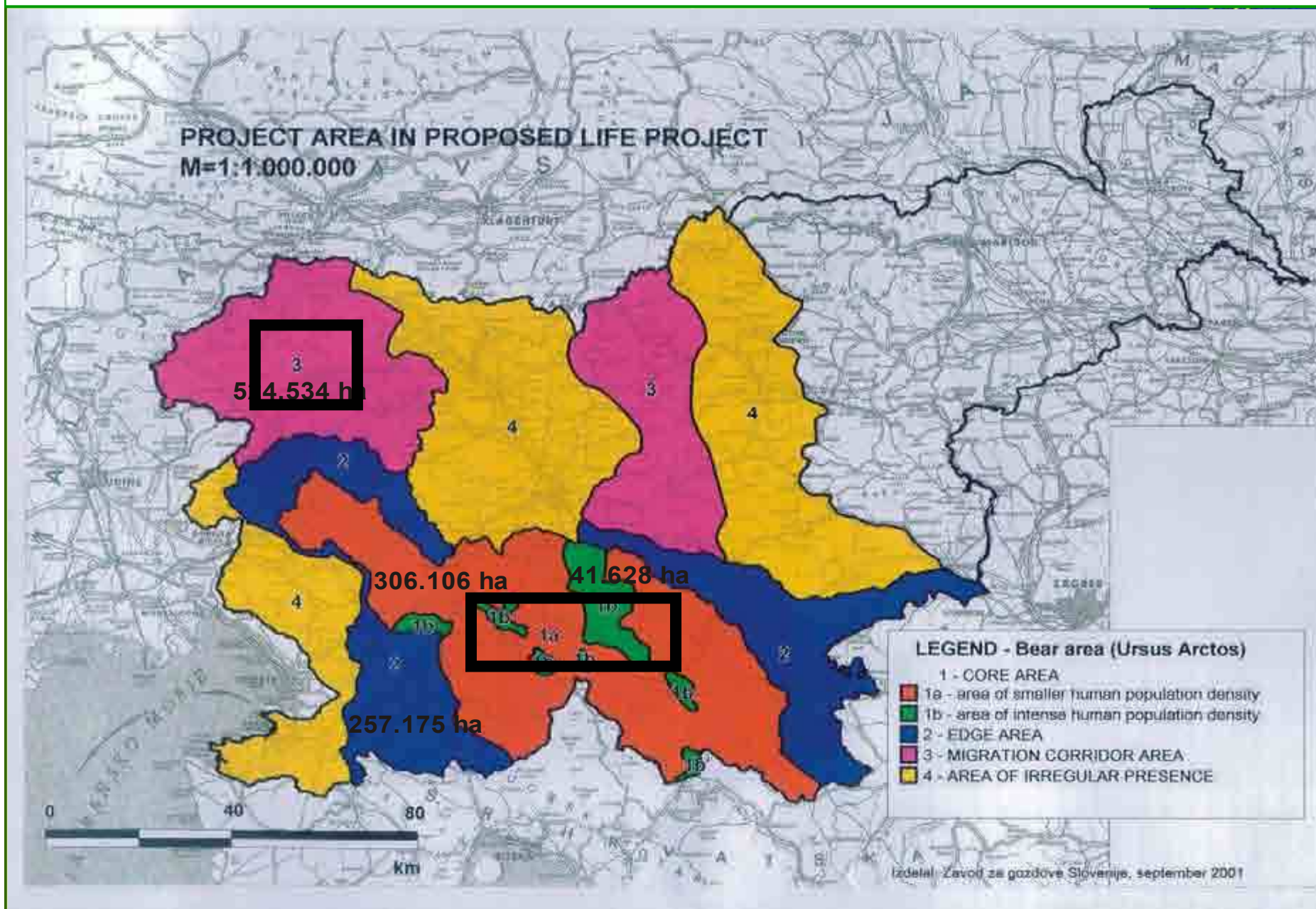
Funding

Total budget: 607.822 €

- EU (75 %)
- Ministry of environment and Spatial Planning (16 %)
- Partners (9%)



The Project area



The aims of the Project - 1



Long-term conservation of the brown bear species in Slovenia including its habitat

The aims of the Project - 2



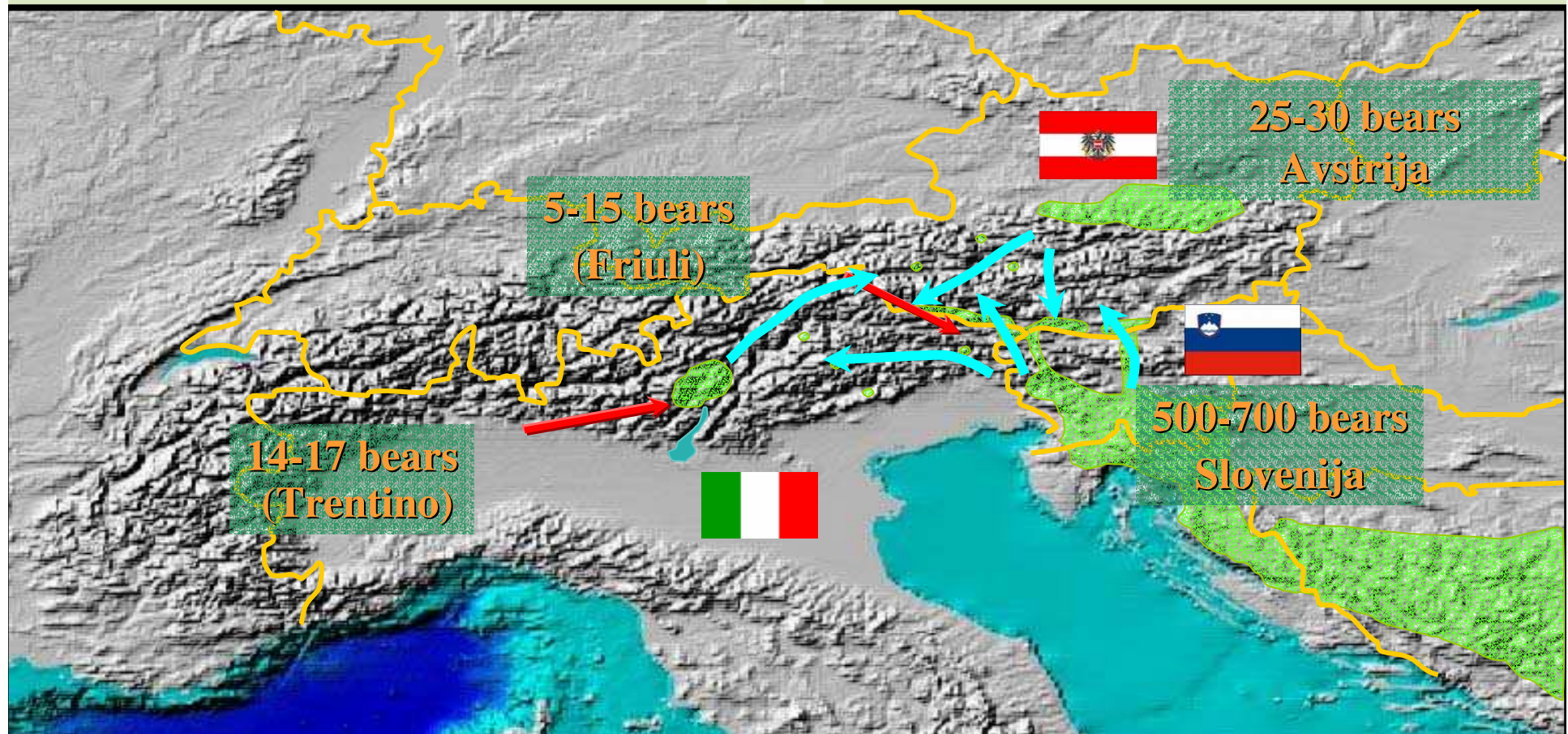
**To improve the coexistence of humans
and bears**



The aims of the Project - 3



To harmonise the management of brown bear with the neighbouring countries





Sections of the Project



SECTION A: Preparatory Actions (7)

SECTION C: Non – reccuring management (4)



SECTION D: Reccuring management (3)

SECTION E: Public awareness (4)

SECTION F: Overall project operation (4)



Management



- **Measures in the Population of Brown bear**
- **Measures in the Habitat of Brown bear**
- **Measures in the Settlements and in the Vicinity of Settlements**



Management

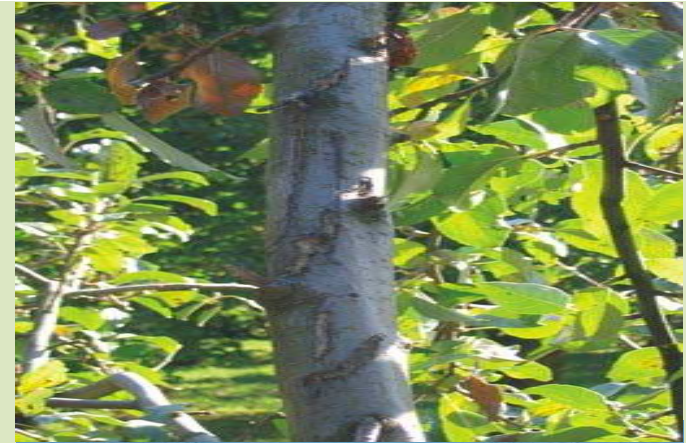


- **Measures in the Population of Brown bear**
- **Measures in the Habitat of Brown bear**
- **Measures in the Settlements and in the Vicinity of Settlements**



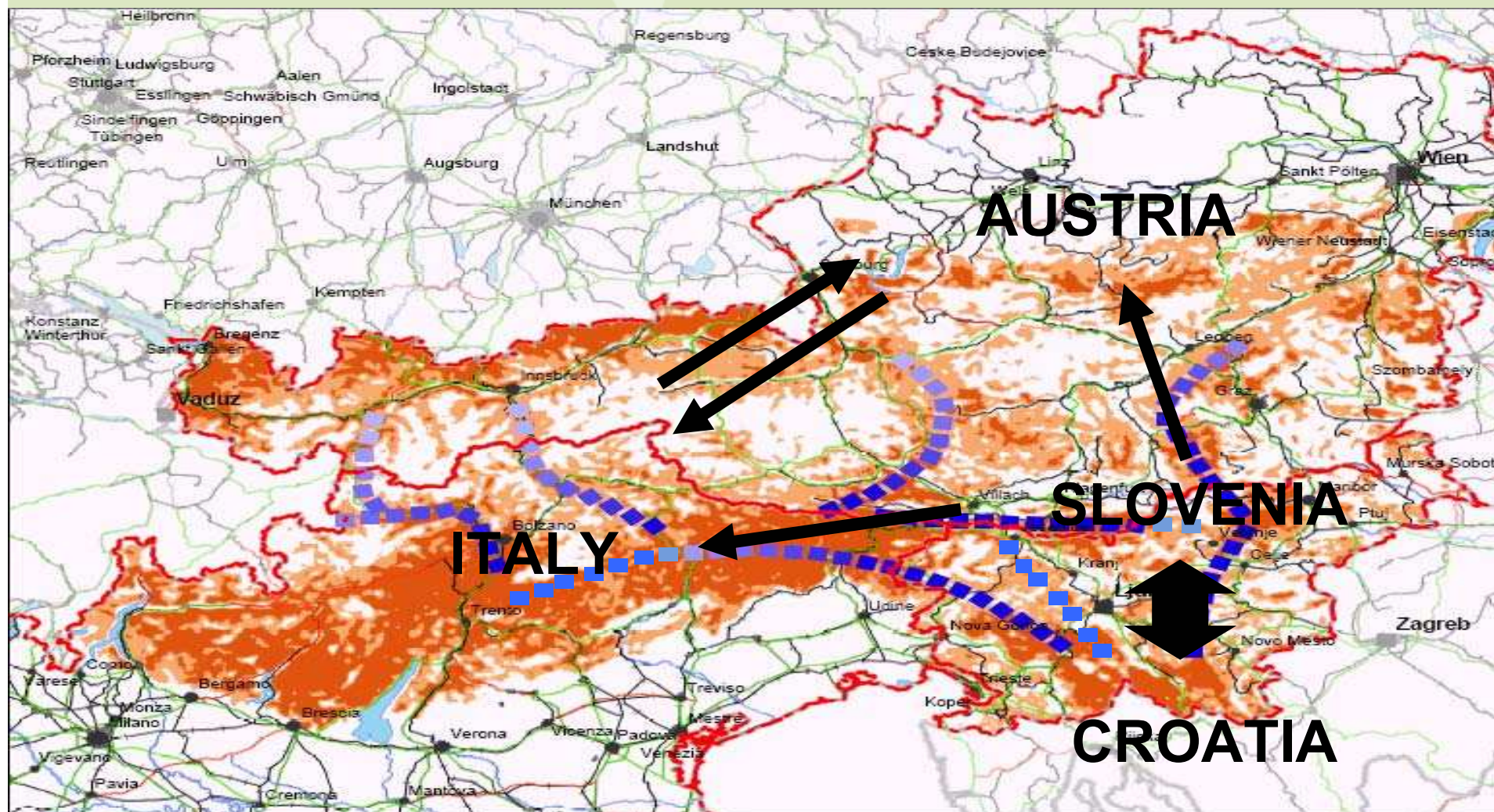
Monitoring

**Establishment of integral
monitoring of brown bear
population**





Cooperation with neighbouring countries





Management



- **Measures in the Population of Brown bear**
- **Measures in the Habitat of Brown bear**
- **Measures in Settlements and in the Vicinity of Settlements**



“Peaceful zones”

1. Winter dens

2. Feeding places

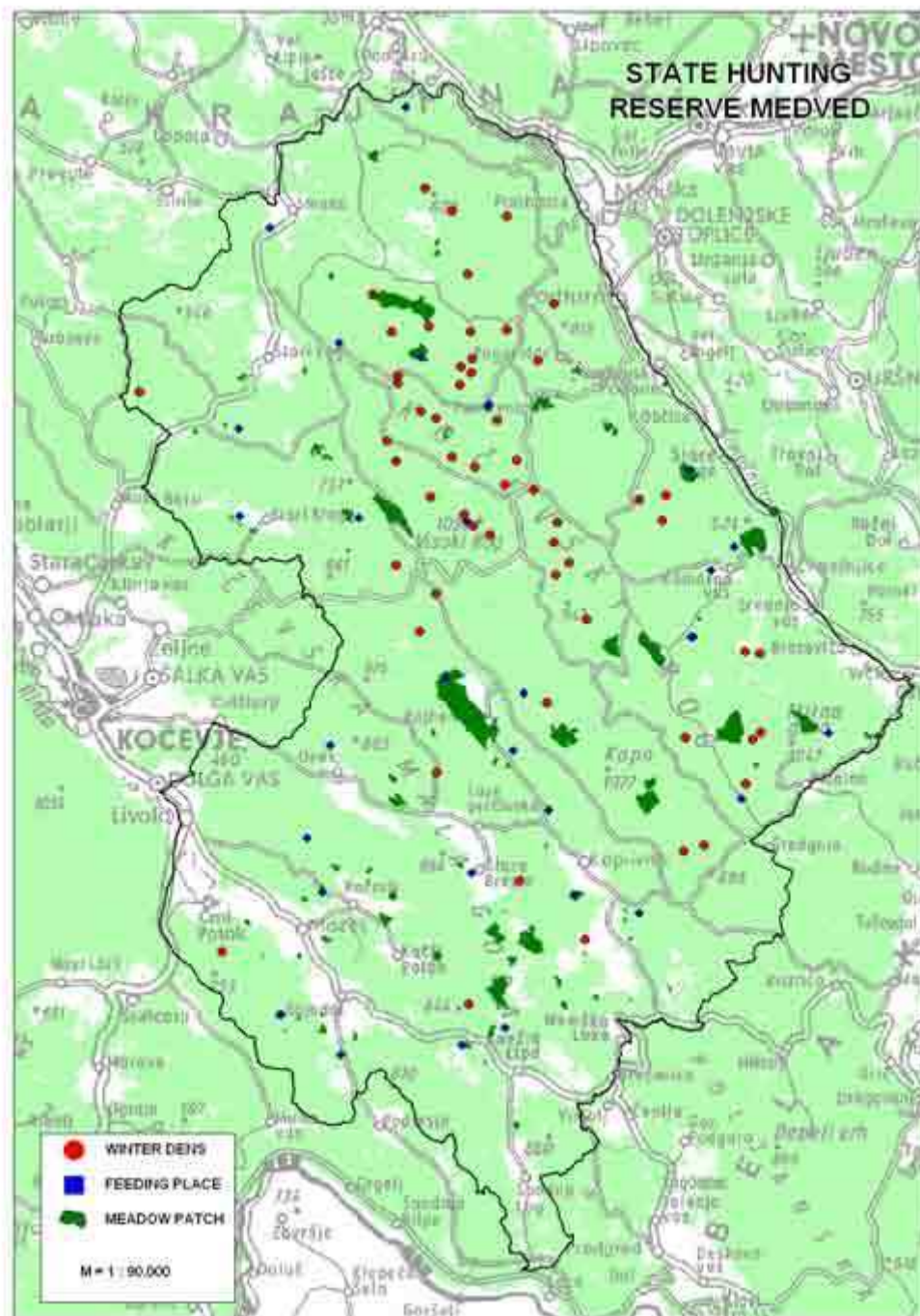




“Peaceful zones”

3. Areas of reach natural food sources





**Inventory of
“peaceful zones”**



Measures



**Forest
management plans**



Management



- **Measures in the Population of Brown bear**
- **Measures in the Habitat of Brown bear**
- **Measures in Settlements and in the Vicinity of Settlements**



Education



Web page:

<http://www.gov.si/zgs>

E - mail:

brown.bear@zgs.gov.si





Education



Projekt Life
"Ohranitev velikih zveri
v Sloveniji -
Faza I (rjavi medved)"



"Celoten film in posamezni deli so avtorsko zaščiteni in jih ni dovoljeno reproducirati."

Film



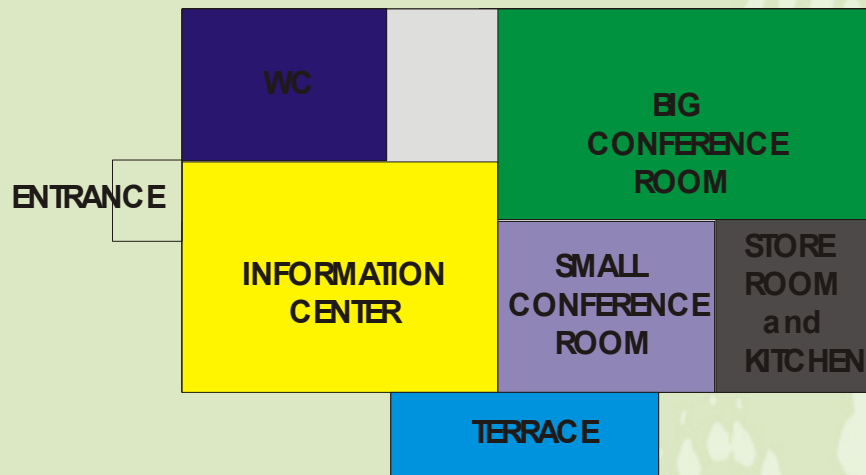
**ZAVOD ZA GOZDOVE
SLOVENIJE**

Rjavi medved
v naših gozdovih





Information centre



The educational display board is divided into four main sections, each with a title and several panels containing text and images of bears.

- KDO SEMI** (Who I am): This section includes two panels with photographs of bears and descriptive text.
- NAŠ ŽIVLJENSKI PROSTOR** (Our living space): This section includes two panels with photographs of bears in their natural habitat and descriptive text.
- KAKO JEM IN KAKO SE RAZMNOŽUJEM** (How I eat and how I reproduce): This section includes two panels with photographs of bears eating and reproducing, along with descriptive text.
- KO PRIDETE NA OBISK** (When you come to visit): This section includes two panels with illustrations of people visiting bears and descriptive text.



Damage compensation system



- **Regulation** (*published in the Official Gazette of the Republic of Slovenia*)
- **Guidelines for damage estimation, forms for damage estimation and pricelist**

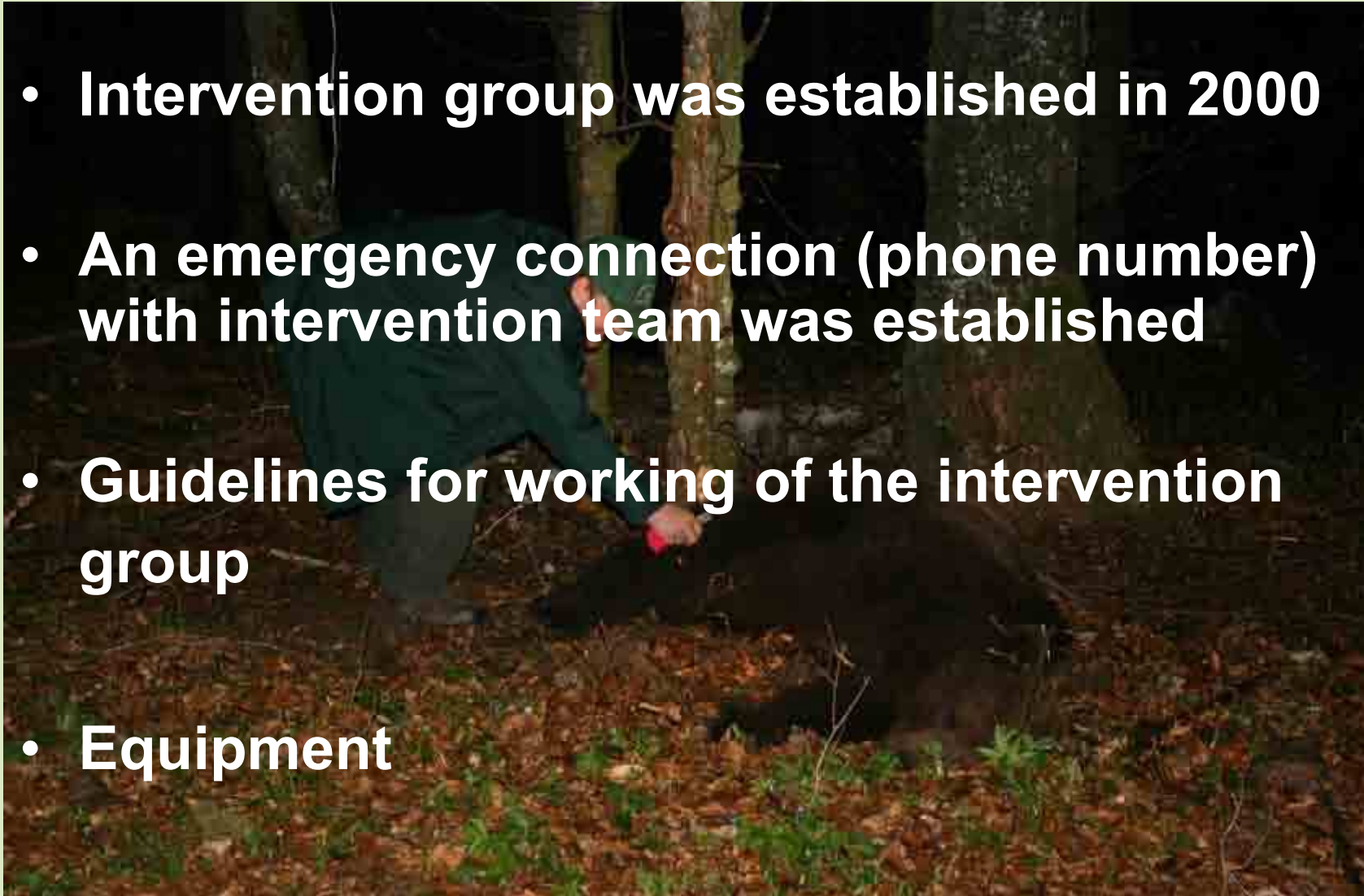




Intervention group



- **Intervention group was established in 2000**
- **An emergency connection (phone number) with intervention team was established**
- **Guidelines for working of the intervention group**
- **Equipment**



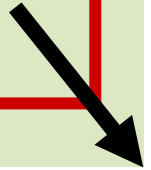


Presence of Brown bear in the Vicinity of Settlements



**Spreading of shrubland
and forest closer to
settlements**

**Rearrangement of
meadows, fields,
pastures and orchards**



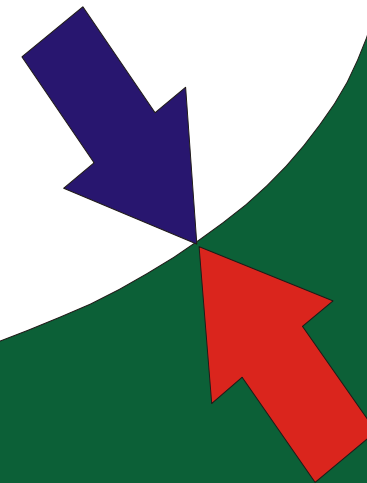
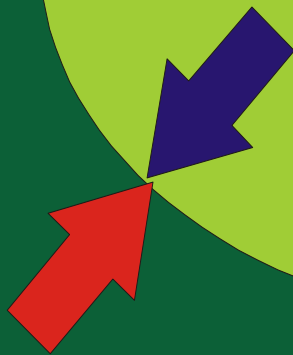


FIELDS, PASTURES, FRUIT GARDEN ...

**MEADOW,
GRASSLAND**

SETTLEMENT

FOREST



THANK YOU FOR YOUR ATTENTION !

